

# "High Frequency Ceramic Solutions"

## 915 MHz Low Pass Filter

P/N 0915LP15B026

Detail Specification: 07/29/04

Page 1 of 2

### General Specifications

<b>Part Number</b>	0915LP15B026
<b>Frequency (MHz)</b>	902 - 928
<b>Insertion Loss</b>	0.5 dB max.
<b>Return Loss</b>	14.0 dB min.
<b>Attenuation (min.)</b>	30 @ 2 x fo
<b>Attenuation (min.)</b>	30 @ 3 x fo

<b>Input Power</b>	3 Watts max.
<b>Impedance</b>	50 Ω
<b>Operating Temperature</b>	-40 to +85°C
<b>Reel Quantity</b>	4,000

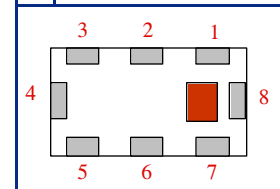
### Terminal Configuration

No.	Function
1	GND
2	NC
3	GND
4	OUT
5	GND
6	NC
7	GND
8	IN

### Mechanical Dimensions

	In	mm
<b>L</b>	0.079 ± 0.004	2.00 ± 0.10
<b>W</b>	0.049 ± 0.004	1.25 ± 0.10
<b>T</b>	0.033 ± 0.004	0.85 ± 0.10
<b>a</b>	0.012 ± 0.004	0.30 ± 0.10
<b>b</b>	0.008 ± 0.004	0.20 ± 0.10
<b>c</b>	0.012 +.004/-.008	0.30 +0.1/-0.2
<b>g</b>	0.014 ± 0.004	0.35 ± 0.10
<b>g</b>	0.026 ± 0.002	0.65 ± 0.05

Unit : mm

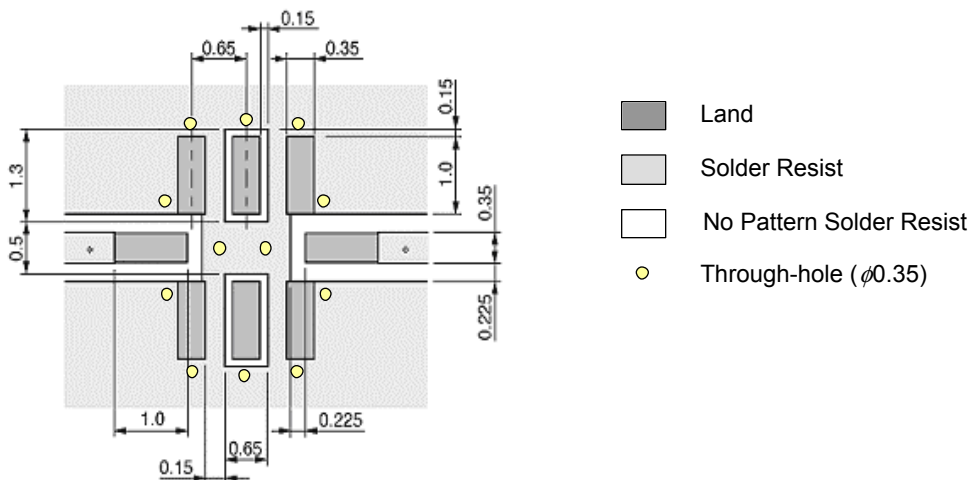


### Mounting Considerations

Mount these devices with brown mark facing up.

Line width should be designed to provide 50Ω impedance matching characteristics.

Units: mm



Johanson Technology, Inc. reserves the right to make design changes without notice.

All sales are subject to Johanson Technology, Inc. terms and conditions.

# "High Frequency Ceramic Solutions"

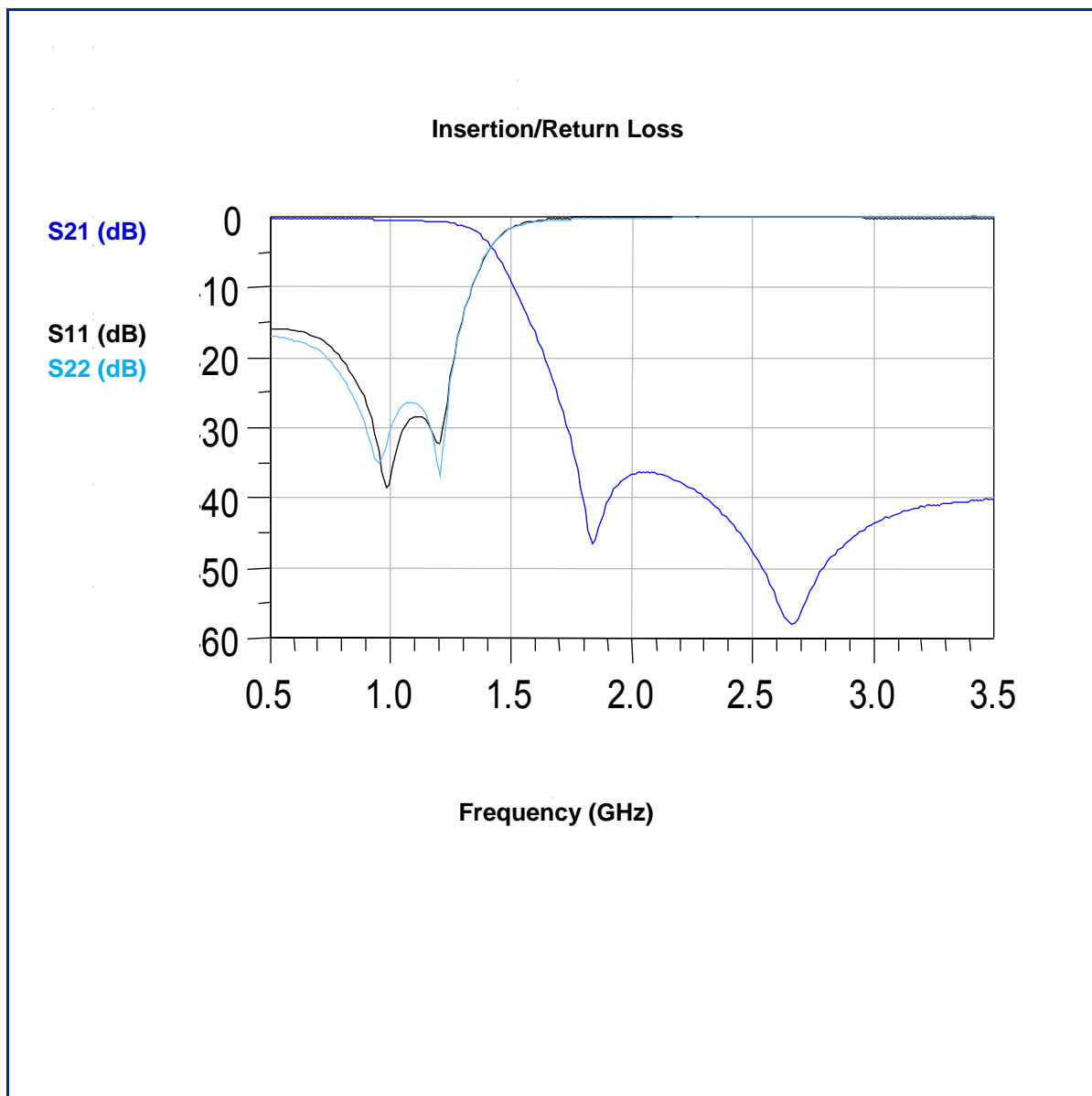
**915 MHz Low Pass Filter**

**P/N 0915LP15B026**

Detail Specification: 07/29/04

Page 2 of 2

Typical Electrical Performance (T=25°C)



Johanson Technology, Inc. reserves the right to make design changes without notice.

All sales are subject to Johanson Technology, Inc. terms and conditions.



[www.johansontechnology.com](http://www.johansontechnology.com)

931 Via Alondra • Camarillo, CA 93012 • TEL 805.389.1166 FAX 805.389.1821

2003 Johanson Technology, Inc. All Rights Reserved